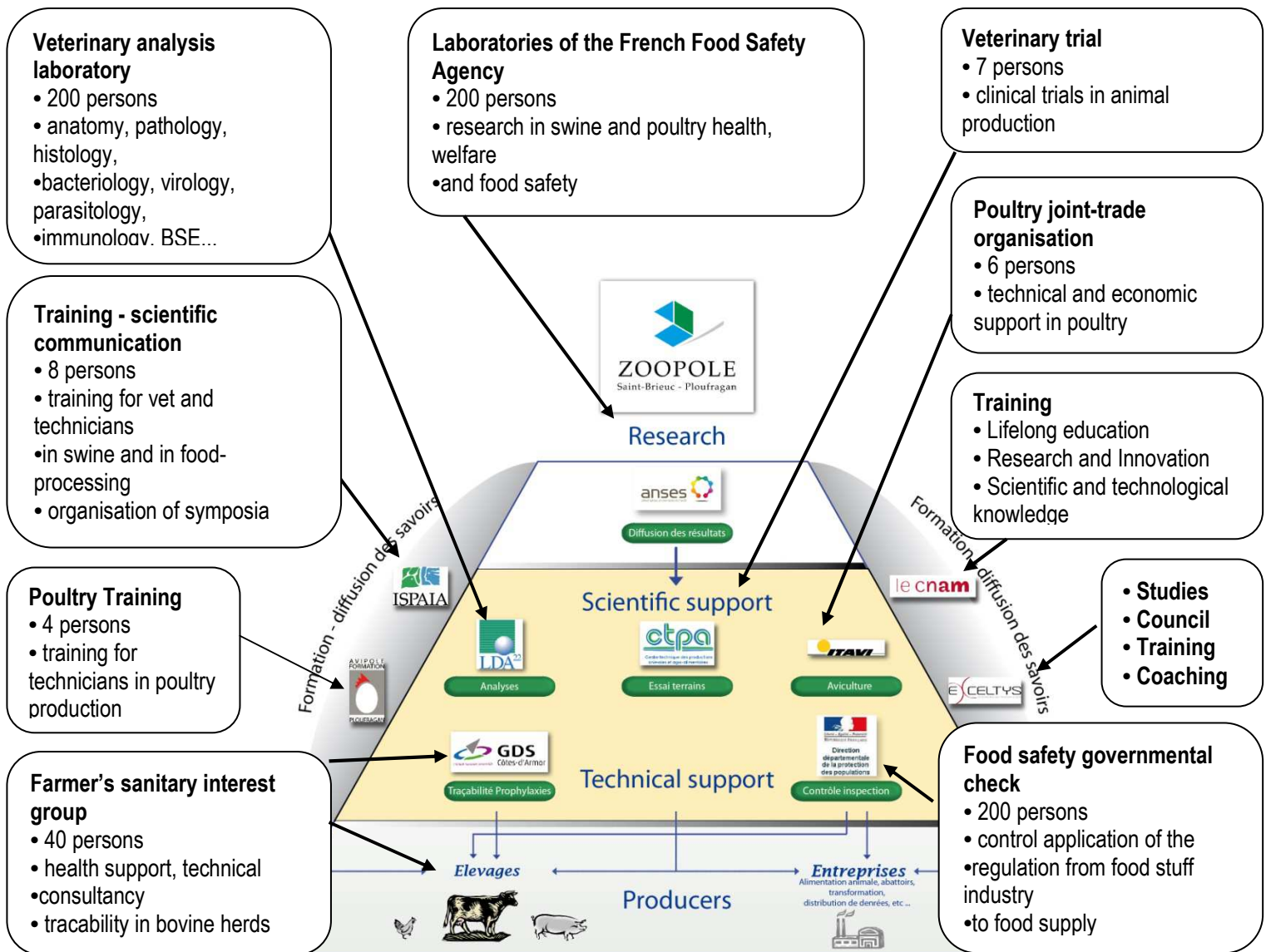


## Field Credibility... in confidence

A service of ZOOPOLE Développement:  
CTPA is located at **Zoopôle** - Ploufragan (France)

**ZOOPOLE** : A Science Park dedicated to **Animal Health** and **Food Safety**  
- over 800 persons : scientists, vets, technicians ...



## Contract Research Organisation: → Clinical trials & Zootechnical studies Statistical Expertise

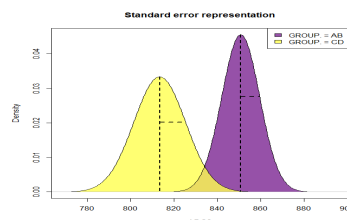


The CTPA: Almost 30 years of experience working as a CRO in clinical and zootechnical field studies:

- In swine, poultry and cattle production
- On drugs: vaccines, anti-infectious compounds, parasiticides, anti-inflammatory products...
- On probiotics, algae, enzymes, aromas, acidifying products, insecticides, disinfecting products...
- New materials

In the heart of ZOOPOLE, CTPA is your specialized partner in field validation for veterinary medication laboratories and agro-feed industry, in strict confidence:

- ✓ A skilled team of 4 veterinarians and 2 technicians, working in concert to achieve:
  - Study organisation (monitoring, protocol writing, study sites screening...)
  - Trial implementation (every-day investigation on farms)
  - Data management
  - Statistical analysis and reports (using SYSTAT, R...)
  - Scientific interpretation: report writing, publications
- ✓ Assurance quality can be taken in charge by ZOOPOLE Developpement services.
- ✓ CTPA has its own pharmaceutical establishment, VETRIAL, approved for drug importation and distribution of investigational veterinary products.
- ✓ Courses and trainings for GCP, statistical analyses, biological sampling methods...
- ✓ Bibliographic work, field enquiries, technology transfer



### Keys factors

- Long-term experience in field trials and Good Clinical Practices.
- Strong relationship with partners of the ZOOPOLE (ANSES, LABOCEA (LDA22), ISPAIA...)
- Strong relationships with field stakeholders (vets, co-operatives, farmers)

#### Contacts CTPA :

Frédéric BERNARD, head of Zoopole Developpement  
2 rue Jean Rostand, BP 7 – Rond-point du Zoopole  
22440 PLOUFRAGAN - France  
Tél: + 33 (0)2 96 78 61 68- fax: + 33 (0)2 96 78 61 69  
Email: [accueilctpa@zoopole.asso.fr](mailto:accueilctpa@zoopole.asso.fr)  
Web: <http://www.zoopole.com/ctpa>

